

PRINCE OF WALES PRIMARY SCHOOL

Newsletter
27th September 2024



Dear Parents/Carers, Governors and Friends,

Head Girl and Head Boy elections

Mrs Langstaffe and I had a wonderful time interviewing this year's candidates for the Head Girl and Head Boy positions. All 28 children spoke eloquently about their desire to make a positive contribution to our school and to support all children and staff in a variety of ways. They reflected on the necessary skills for this role and how they link to our school values. It was a privilege to hear them talk so passionately about our school and how to make 'a happy place for learning even better', regardless of their success in this application. Congratulations to: Anna Gyamerah – Head Girl, Aayden Joshi – Head Boy, Tsihon Sosnios – Deputy Head Girl and Abdul Braimah – Deputy Head Boy.

Enfield Libraries Consultation

A consultation is taking place to determine the future provision of Enfield's library services. The full details and potential impact on your local provision, including proposed closure of Enfield Island Village Library can be found here: [Library consultation - Draft library strategy](#). Ensure that your views are heard by completing this [questionnaire](#).

ARBOR APP for Clubs and Parents evenings

We are now using ARBOR to manage bookings for after school clubs and parents' evenings. Gradually, we will use the app to communicate fully with you and share data such as attendance and in the future to use for all payments.

To sign up, use our school link: <https://prince-of-wales-primary-school.uk.arbor.sc/>

Once on the page, parents who have not yet registered need to click on [First time logging in?](#) Next, enter the email account that you have registered with school. Please contact the school office if you have any questions or issues.

Feedback from our School Community

Turn to the last page of this newsletter to find the responses to 'Why our school a great place to learn and to work is'.

Health and Safety warnings on Page 10

A letter from our catering provider about products contain [mustard](#) and also a warning about the risk of [water beads](#).

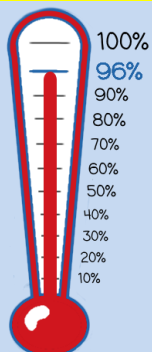


HEARD IT THROUGH THE GRAPEVINE - Parenting skill podcast

HEARD is a free parenting forum that provides a safe space arena for parents where they can seek advice from a panel of experts from a range of fields. Give your views on the range of topics you might be interested in to help ensure the right topics can be provided for you: [Podcast topics for parents and carers](#)

Mr Jan M Bless
Headteacher

Attendance for week beginning 27th September 2024



Birch 85.3%	1G 98.1%	2F 98.2%	3F 98.5%	4A 80%	5G 92.3%	6C 88.6%
Oak 87%	1S 84.6%	2G 88.5%	3H 90.8%	4H 97.4%	5S 93.8%	6D 100%
	1T 98.8%	2M 95.6%	3W 91.2%	4L 87.1%	5T 92.5%	6F 94.2%

Well done to **1G, 1T, 2F, 3F, 4H and 6D**, with attendance above 96%.

Overall attendance since September 2024: **92%**



SCHOOL YEAR 2024/2025 – upcoming dates		
DATE	YEAR	EVENT
Wed 2 nd October	Y1 Y2	Maths Calculation Workshop 8:50am
Fri 4 th October	N N&R	Nursery Cafés Tour of EYFS for new/interested parents - 9:30am Community Room
Wed 9 th October	EYFS Y1 Y2	Phonics Workshop 8:50am
15 th and 17 th October	all	Parent consultations (except 3F – 15th and 16th October; Oak – tbc due to Jury Service)
Thu 7 th November	N, R, Y1	Dentist – fluoride varnish
Thu 21 st November	R-Y6	School Nurses – flu vaccination
27 th November	all	Parent Forum 8:50am
Tue 5 th November	all	Individual photos
9.12.24 10.12.24 11.12.24	all	Nursery & Reception Year 3 am / Year 2 pm Year 6 am / Year 5 pm Year 4 pm
10.12.24 & 11.12.24	Y1	Y1 Nativity am (instead of Parent Café)



School Term and Holiday Dates Academic Year 2024-25

Autumn Term 2024

Friday 25th October
Monday 4th November
Friday 29th November
Friday 20th December

Last day of half term
School reopens to pupils
Inset Day 3 – school closed
Last day of Autumn term –
school closes at 1.30pm

Spring Term 2025

Monday 6th January
Tuesday 7th January
Friday 14th February
Monday 24th February
Thursday 4th April

Inset Day 4– school closed
School reopens to pupils
Last day of half term
School reopens to pupils
Last day of Spring term – school closes at 1.30pm

Summer Term 2025

Tuesday 22nd April
Monday 5th May
Friday 23rd May
Monday 2nd June
Tuesday 3rd June
Tue 22nd July

School reopens to pupils
School closed – Bank Holiday
Last day of half term
Inset Day 5– school closed
School reopens to pupils
Last day of the school year – school closes at 1.30pm



This month we introduce on our  school vision

Our SCHOOL VISION

'learning together, growing together'

Prince of Wales is an inclusive, ambitious and values driven community of LEARNERS, thriving in a happy and safe environment.

Our school community celebrates the LEARNERS journey by becoming:

- LEARNERS who take pride in learning and look forward to each day
- LEARNERS who evolve and adapt to fresh challenges
- LEARNERS who are global citizens and contribute to a sustainable and fair society
- LEARNERS who are creative and are innovative thinkers
- LEARNERS who value diversity and the opportunity to learn from and about each other



We live this together through our LEARNERS values.

This week we focus on:

LEARNERS who value diversity and the opportunity to learn from and about each other

These pupils received a certificate this week:

Sofia 1G, Kyra 1S, Aylin 1T, Mert, 2F, Uliks 2G, Adner 2M, Ayaz 3F, Jensila 3H, Kevin 3W, Naz 4A, Elis 4H, Janiyah 4L, Marloryne 5G, Yagmur 5S, Nathanael 5T, Maisie 6C, Mira 6D & Ali 6F



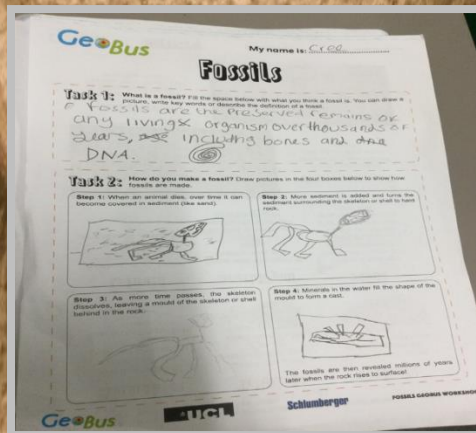
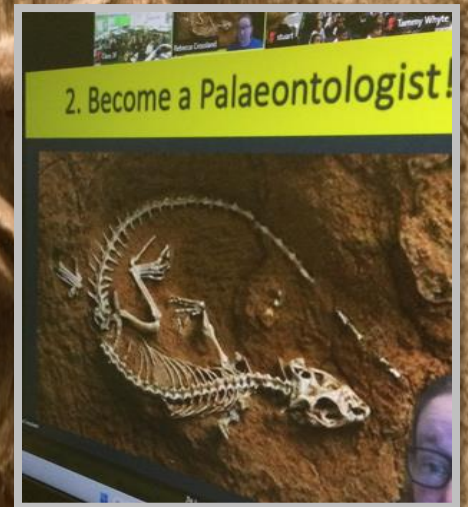
Well Done!

Fossils

Year 3 – Fossil workshop on Tuesday 24th September 2024

The Year 3 children had a magnificent morning learning all about fossils and the work of Mary Anning, the famous English Fossil collector and Palaeontologist.

Children were shown different types of fossils such as preserved remains, trace fossils, mould fossil, cast fossil, petrified fossil and carbon film. They were given 3D glasses and which lifted the fossils off of the page. The children were asked to become a palaeontologist by matching up fact cards to 3D fossil cards. Rebecca Crossland from GeoBus delivered a fun and interactive workshop which the children enjoyed and learnt a lot about fossils and its history.



MEET THE Authors

IMPOSSIBLE CREATURES

We loved 'Rooftoppers' & now we know what inspired it! -Year 6



We cannot wait to read more of Katherine's stories! -Year 5

Last week at POW, year 5 & 6 had the privilege of joining Waterstones' virtual event with **Author Katherine Rundell**, where we were able to immerse ourselves in the wonderful world of her **'Impossible Creatures'** from her new novel of the same name.

Katherine gave us an insight into the life, inspirations and challenges of a budding author. She inspired us to ask **'what if'** of the world around us and take pleasure in the little things to help stir the stories inside of us all.



WE EVEN RECEIVED A MESSAGE FROM THE AUTHOR HERSELF



Wish me luck keeping those little feet firmly on the ground... haha!



THIS TOILET HAS BEEN
TWINNED
Prince of Wales Primary School



WITH A LATRINE IN
NEPAL

Latitude: 27.678033, Longitude: 85.9859
Aagra VDC, Makawanpur



1 in 4 people around the world don't have a loo.

By supporting Toilet Twinning you are helping to flush away poverty.
Toilet Twinning is a Registered Charity Number 265464 (England and Wales) and Number SC037624 (Scotland).

Nepal

Nepal is in Asia and situated between China and India. Nepal has the Himalayan Mountain range and Mount Everest, the world's highest mountain. You will learn about mountains in year 3.



HEARD IT
THROUGH THE
GRAPEVINE

@HEARDenfield /HEARDenfield

HEARD is a free parenting forum that provides a safe space arena for parents where they can seek advice from a panel of experts from a range of fields

Our community of parents exists so we can share our struggles with one another and have a platform to discuss what we face

As everything moves online, we wanted to make our events and expert advice as accessible as possible... so here we are!

HEARD It Through The Grapevine is a podcast for parents to receive expert advice!

MEET THE HOSTS



LAVERNE ANTROBUS
TV presenter and child psychologist



MERVIN CATO
Head of Secondary Behaviour Support Service



AYSE ADIL
CEO of Family Based Solutions

Brought to you by HEARD Enfield and NEXUS



Funded early education and childcare

Informed Families
Civic Centre,
Silver Street,
Enfield, EN1 3XA



Terrific Twos

For families in receipt of certain benefits

The Terrific Two funding is up to 570 hours of Funded Early Education and Childcare per year for your child. This equates to 15 hours per week for 38 weeks a year, during term time. Your provider may agree to 'stretch' your entitlement by using fewer hours over more than 38 weeks per year. Check with your childcare provider to find out if this is something they offer.

If you are eligible your child can access Funded Early Education and Childcare with any nursery, preschool, child-minder or school nursery that is registered to offer funded places. Funding commences the term after your child turns 2 years old.

Child turns 2 between	When to apply
1 January to 31 March	Apply from the September before to be eligible from the following April
1 April to 31 August	Apply from the January before to be eligible from the following September
1 September to 31 December	Apply from the April before to be eligible from the following January

How to apply

To apply, visit the informed families website at <https://www.enfield.gov.uk/if>. Please only apply to Enfield if you live in the London Borough of Enfield

OR

Text the word **TERRIFIC** to **81025** - We will send you a text back asking for all the information you will need for the application to be processed.

Important: Only apply the term before your child turns 2, using the table as a guide:

if@enfield.gov.uk

www.enfield.gov.uk/if

Informed Families

@if_enfield



FAMILIES FIRST
QUALITY AWARD
ACCREDITED



Eligibility criteria

Your 2-year-old will be eligible for Terrific Twos funded early education and childcare if you receive one of the following benefits:

- Income Support
- Income-based Jobseeker's Allowance (JSA)
- Income-related Employment and Support Allowance (ESA)
- Universal Credit, and your household income is £16,400 a year or less after tax, not including benefit payments
- Universal Credit, and your household income is £16,190 a year or less before tax payments
- Child tax credits and, your household income is £16,190 a year or less before tax payments
- The guaranteed element of Pension Credit
- The Working Tax Credit 4-week run on (the payment you get when you stop qualifying for Working Tax Credit)

Parents are not eligible where they claim working tax credits and child tax credits at the same time.

2-year-olds can also get funded early education and childcare through the Terrific Twos scheme, if they:

- are looked after by a local authority
- have an education, health and care plan (EHCP)
- get Disability Living Allowance
- have left care under an adoption order, special guardianship order or a child arrangements order

If you're a non-UK citizen who cannot claim benefits, you may still get funded childcare for your 2-year-old. You must live in England and your household income must be no more than:

- £26,500 for families within London with 1 child
- £34,500 for families outside of London with 1 child
- £30,600 for families within London with 2 or more children
- £38,600 for families within London with 2 or more children

You cannot have more than £16,000 in savings or investments.

With Terrific Twos you may have to pay for extra costs like meals, nappies or trips



3 and 4 year olds

- 15 hours childcare for all families in England with 3 and 4 year olds for 38 weeks of the year.
- 30 hours childcare for eligible working parents in England with 3 and 4 year olds for 38 weeks of the year. (Eligibility criteria below)

9 mths - 23 mths

- 15 hours childcare for eligible working parents for 38 weeks (up to 570 hours per year)
- From 1 January, 1 April or 1 September following your child reaching 9 months old.

Where can I use it?

- Full day care (e.g. nurseries)
- Schools
- Childminders
- Sessional providers (e.g. playgroups)

How to apply

Visit the www.childcarechoices.gov.uk website to find out more.

2 year old funding

- 15 hours childcare for eligible working parents for 38 weeks (up to 570 hours per year)
- From 1 January, 1 April or 1 September following your child's 2nd birthday.

9 mths - school age

- 30 hours childcare for 38 weeks per year (up to 1,140 hours) for children from 9 months up to school age, for eligible working parents.
- From 1 January, 1 April or 1 September following your child reaching 9 months old.

What isn't covered?

The 15 hours of childcare/early education for 2-year-olds is not intended to cover the costs of meals, other consumables (such as nappies or activities (such as trips). Providers may charge a fee for these additions.

Eligibility criteria

- Each parent earning at least the equivalent of 16 hours/week at national minimum wage but under £100,000 adjusted net income/year
- 15 hours of childcare or early education for 38 weeks (up to 570 hours per year), that you can use flexibly with one or more providers.
- Some providers will allow you to 'stretch' the hours over 52 weeks, using fewer hours.
- See table on page 1 for when to apply.

Even more support for working parents

Tax-free Childcare: eligible working parents with children aged 11 or under can get up to £2,000 per child each year towards their childcare costs, or up to £4,000 for children with a disability aged 16 or under.

Universal Credit Childcare: eligible working parents in the UK can claim back up to 85% of their childcare costs for children aged 0-16. Plus, eligible parents can access Universal Credit fund upfront, helping those who are starting a job or increasing work hours

Government help with paying for your childcare is available through Childcare Choices. Whether you have toddlers or teens you could get support. Visit www.childcarechoices.gov.uk to find out more.

To get help finding childcare, please visit our Family Information Directory on our website. The directory can help you find childcare for your child based on your postcode and the range of distance that you specify. You can create a list of your chosen providers to compare or print them out.



Visit our website
www.enfield.gov.uk/if
Scan the QR code

FIND OUT MORE
0800 694 1066

Monday to Friday, 9am to 4pm

if@enfield.gov.uk

www.enfield.gov.uk/if

Informed Families

@if_enfield



FAMILIES FIRST
QUALITY AWARD
ACCREDITED



Reception & Nursery Tours Prince of Wales Primary School

We have three tour dates available for new pupils who are:

Ready to start school in September 2025

Ready to join nursery in either January, April or September 2025

Open Mornings:

Friday 4th October at 9.30am

Wednesday 23rd October at 9.30am

Friday 22nd November at 9.30am

Please call our school office to book your place on **01992 762840**

We look forward to showing you the exciting opportunities we have available to offer your child.

PRINCE OF WALES PRIMARY SCHOOL

Salisbury Road, Enfield, Middx EN3 6HG Tel: 01992 762840

Email: office@princeofwales.enfield.sch.uk



Learning together

Growing together

Prince of Wales school

We're offering cutting-edge technology after school clubs!

6 weeks for £51!



ROBOTICS

In our club, you'll have the opportunity to learn about coding, music technology, robotics, and 3D design. Whether you're a beginner or already have some experience, we have something for everyone.

Our goal is to help you develop your digital skills and have fun! You'll work on exciting projects, learn from experienced mentors, and collaborate with other tech-savvy students.



WEBSITE CODING

For more info and bookings visit:
learn.uteachmi.com/princeofwales



Or scan me!

KS1
Mondays: 4th, 11th, 18th & 25th in November
2nd & 9th in December.
From 3:30pm - 4:30pm

KS2
Thursdays: 7th, 14th, 21st & 28th in November.
5th & 12th in December.
From 3:30pm - 4:30pm

Ofsted

Klarna

We accept tax-free child care vouchers!
Pay installments with Klarna

Adoptive Parents Education Support



NOTE NEW TIME!

Now 9:30 – 11:00am

Coffee Morning

- Are you the parent of an adopted child?
- Are you aware of the educational support available for your child?
- Would you like the opportunity to discuss any educational issues? (Examples could include SEN, attendance, homework, friendships, or anything else!)
- Would you like to meet other adoptive parents?

Please come and join us on:

Wednesday 23rd October 2024
9:30 – 11:00 am

West Lea School, (Haselbury Campus)
Haselbury Road
Edmonton, N9 9TT

Please contact Jane Manning (contact details below) to reserve your space



To find out more contact: Jane Manning (Previously Looked After Children Officer): jane.manning@enfield.gov.uk



Enfield Parenting Directory



EXPLORE

Parents and Carers are children's first educators and teachers. This is something most people agree on.

As a parent, you are not just 'mum' or 'dad'. You are also a nurse, doctor, cook, teacher, coach, therapist, driver and cleaner – with no time off and no instruction manual!

We know that parenting can be hard work and that all parents and carers (including fathers) need help and support from time to time.

In Enfield, families remain front and centre of our vision, so this directory has a range of parenting resources for every stage of a child's development. All resources included are aimed at strengthening parents' and carers' knowledge, confidence, and skills to promote positive development right from the start.



CONTACT US

Parent/Carer Wellbeing

Special Educational Needs and Disabilities

Universal for All Parents 0-18

Specialist Programmes

Family Relationship Programmes

Support Groups & Forums for Parents

Babies and Toddlers Groups

Digital Parenting Resources

IMPORTANT ANNOUNCEMENT

In line with recent Food Standard Agency advice.

Anyone with a **PEANUT ALLERGY** should not consume any products containing or may contain **MUSTARD.**

Please check with the catering staff who will be able to help you.

Stir.
let's eat, together

Wednesday 25th September 2024

Dear Parents and Guardians,

In light of the recent Urgent Food Standards Authority Statement 'Urgent Allergy Advice: Mustard Ingredients Contaminated with Peanuts' regarding the advice that all people with a Peanut Allergy should avoid any product that now contains Mustard, Stir are issuing updated guidance to show how we are managing this issue.

We believe that this poses a low risk to our business and that we already have the relevant safety procedures in place but would like to make you aware of the steps we are taking to mitigate any issues.

- We are displaying the Customer Notice attached on all food service counters.
- We are continuing with our standard policy of completing daily manual allergen matrices for all dishes cooked and having them available on all service counters.
- Any dishes that 'Contains/May Contain Mustard' are being recorded as also 'Contains Peanuts' on the allergen matrices that are used by kitchen teams to ensure that children with allergies are not served any potentially harmful foods.
- Gluten free products in particular may contain mustard, therefore if children have gluten and peanut allergies, these products will not be used for the time being.

Safeguarding your children's safety is our top priority and we are committed to ensuring that they are not exposed to allergens when they access Stir catering facilities.

Please contact: info@stirfood.co.uk with any enquiries.

Kind regards,



Deborah Batchelor

Managing Director
Stir Food Ltd.

Keep water beads away from young children



Children love water beads. But it's really dangerous if a young child swallows them.



They expand in the belly and can block the bowel. Some grow as big as golf balls.

A child may need major surgery to remove them. So please keep them away from young children.



If you suspect a child has swallowed a water bead, get medical help straight away.

Scan to learn more



www.capt.org.uk

[@ChildAccidentPreventionTrust](https://www.facebook.com/ChildAccidentPreventionTrust)

[@capt_charity](https://www.instagram.com/capt_charity)



URGENT WARNING: KEEP WATER BEADS AWAY FROM UNDER 5'S

An [alert](#) has been issued warning parents and childcare settings to keep water beads away from children under 5 years old.

With their bright colours and squishy feel, water beads are especially appealing to young children. When dry, water beads are tiny and can easily be swallowed without detection. As they bathe in stomach fluids, some can expand to 400 times their original size, posing a serious risk of blockage in a child's bowel. There is also a risk of inhalation, causing coughing or choking.

[Keep water beads away from young children \(capt.org.uk\)](http://www.capt.org.uk)



LET'S
WALK TO
SCHOOL

INTERNATIONAL WALK TO SCHOOL MONTH

Autumn Street Safari



There are lots of interesting things to see and do as you walk, wheel or scoot to school. How many of these activities can you tick off on your Autumn Street Safari?

Find a pretty feather



Spot a bird and draw it



Make art using fallen leaves



Hug a big tree



Look under a rock - who lives there?



Find a red leaf



Make up a scary story



Juggle with pinecones



Jump over a puddle



Pretend to be a squirrel asleep for the winter



Learn why leaves change colour



Spot a zebra crossing



Say hello to a neighbour



Dance around a mushroom



Close your eyes and listen - what do you hear?



Stamp on a pile of leaves



Name: _____

Age: _____



AUTUMN FAMILY WALKING ACTIVITIES



Going for a walk is a great way to explore your local area and have fun with your family and family. Notice what you can smell, feel, hear and see as you walk in a local park or green space - it might surprise you!

Did you discover a sticky mushroom or make an autumn mandala? We'd love to see your autumn finds! Your parents or carers can share your photos and videos on social media using the hashtag #AutumnStreetSafari

WHY NOT TRY...



Write a poem or story about a raindrop's journey down the street.



Use the items you collect on your walks to create an autumn nature mandala.



Make a hedgehog house from an upturned plastic box filled with dry leaves.

PARENTS AND CARERS - WE WANT TO HEAR FROM YOU!
Share a memory from your Autumn Street Safari for a chance to win in our prize draw!

FIND OUT MORE BY SCANNING
THE QR CODE OR VISITING
[LIVINGSTREETS.ORG.UK/AUTUMN](https://www.livingstreets.org.uk/autumn)



Living Streets is the UK charity for everyday walking and the people behind the Walk to School campaign.

[LIVINGSTREETS.ORG.UK](https://www.livingstreets.org.uk)

