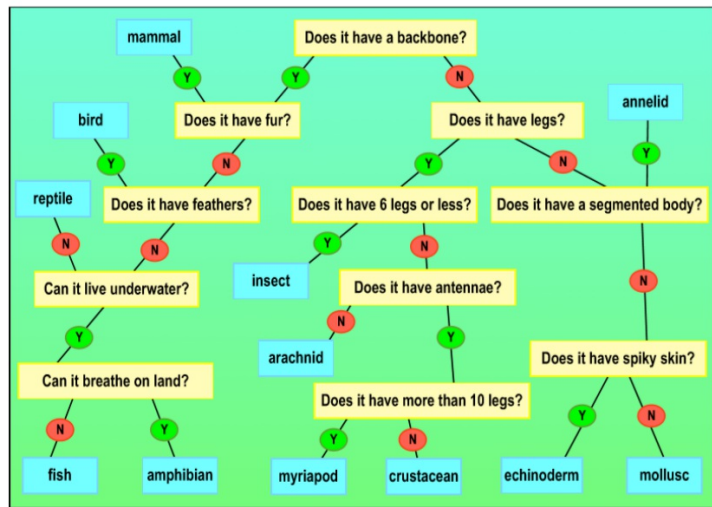


Yesterday's answers

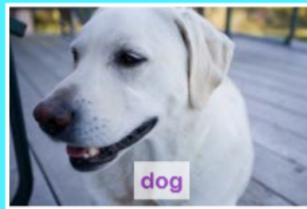
1. *mammal (rabbit)*
2. *amphibian (newt)*
3. *reptile (crocodile)*
4. *fish (tuna)*
5. *bird (goose)*
6. *insect (butterfly)*
7. *mollusc (squid)*
8. *crustacean (crab)*
9. *echinoderm (star fish)*
10. *arachnid (tarantula)*
11. *annelid (earthworm)*
12. *myriapod (millipede)*



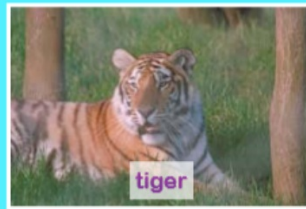
How many did you get right?



wolf



dog



tiger



lion



dolphin



squirrel



badger



goat



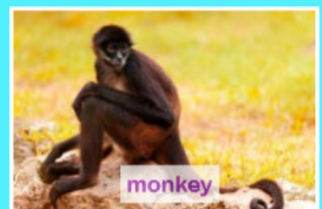
gazelle



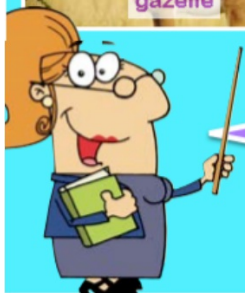
rabbit



panda



monkey



These animals all belong to the same group. They are mammals. What do they have in common? How are they different from each other?

Even though all mammals have some things in common, some, for example, are aquatic while others live entirely on land. Some are carnivores while others are herbivores. Some have long legs, some have short legs. There are many differences between mammals.



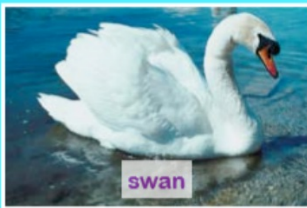
dolphin

- Aquatic
- Carnivore
- No legs
- Fins



gazelle

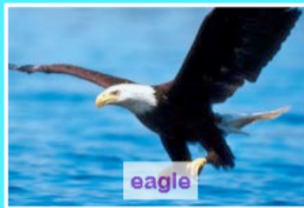
- Lives on land
- Herbivore
- Four legs
- Antlers



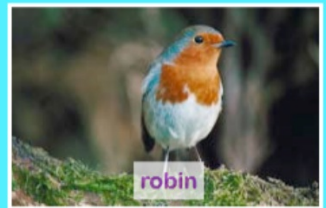
swan



sparrow



eagle



robin



penguin



duck



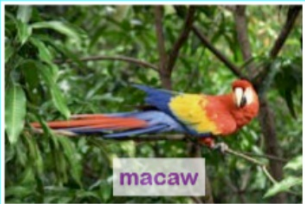
toucan



flamingo



owl



macaw



emu



chicken

Have a look at these birds. What criteria could you use to sort them into groups?





Birds have a lot in common but there are differences between each species. See if you can sort some different birds into groups according to their characteristics then answer these questions.

1

What features do all birds have in common?

2

Name three things that can be different between species of bird:

3

How could you explain the differences between an ostrich and an emu?

4

How could you explain the differences between a magpie and a penguin?

5

What do you think is the biggest difference between an owl and an eagle?

See the birds on the previous slide to help you.