

# Similes and Adjectives



twinkl

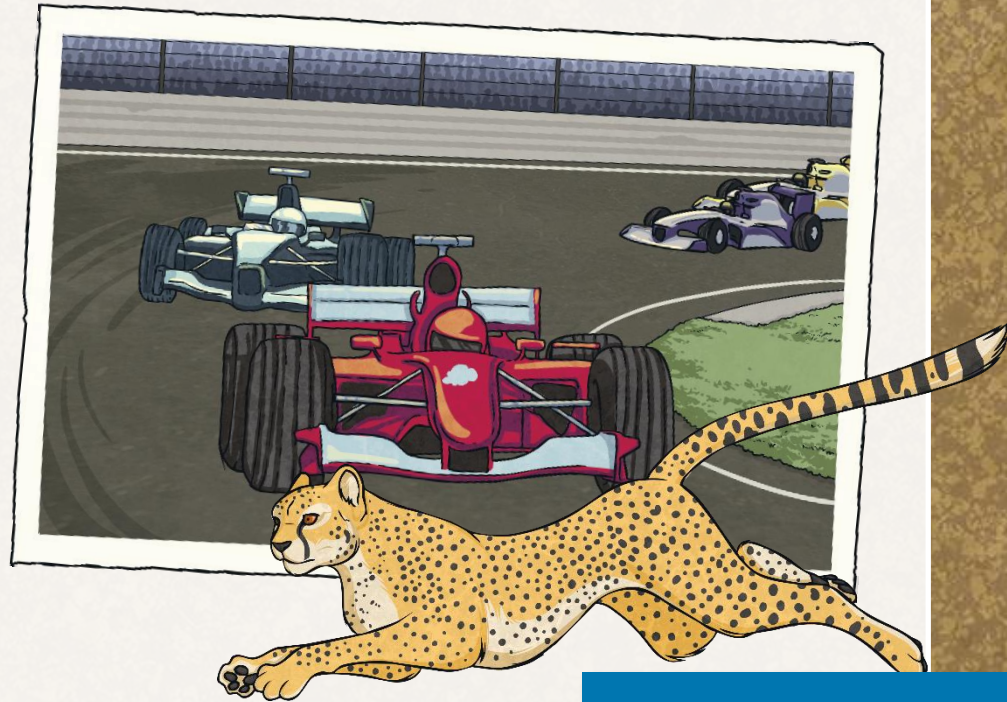
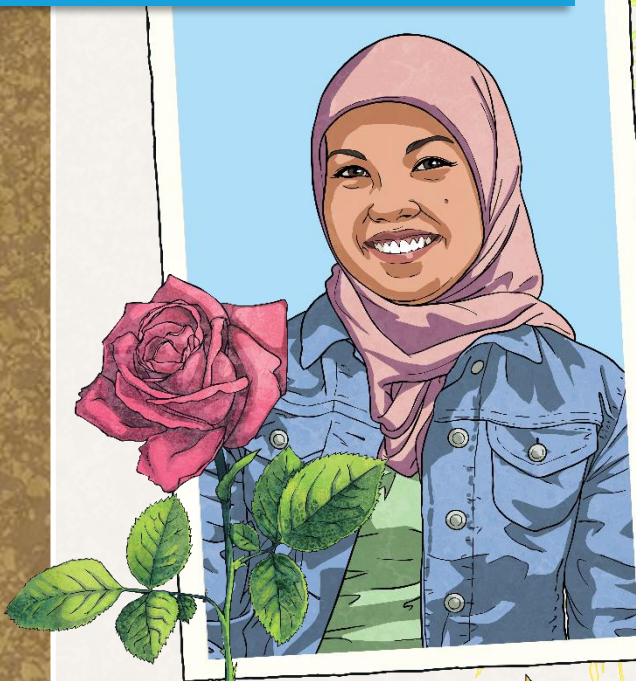




# Simile Reminder

A simile is a way of describing something by comparing it to something else using 'like' or 'as'.

Her eyes are **like** stars and her lips are **like** roses.



The car was as fast **as** a cheetah



# Now you try...

Finish the similes:



The doll's face was as smooth as...



Greece was hot like...



The book was as exciting as...



The night was as black as...



The fireworks were colourful like...

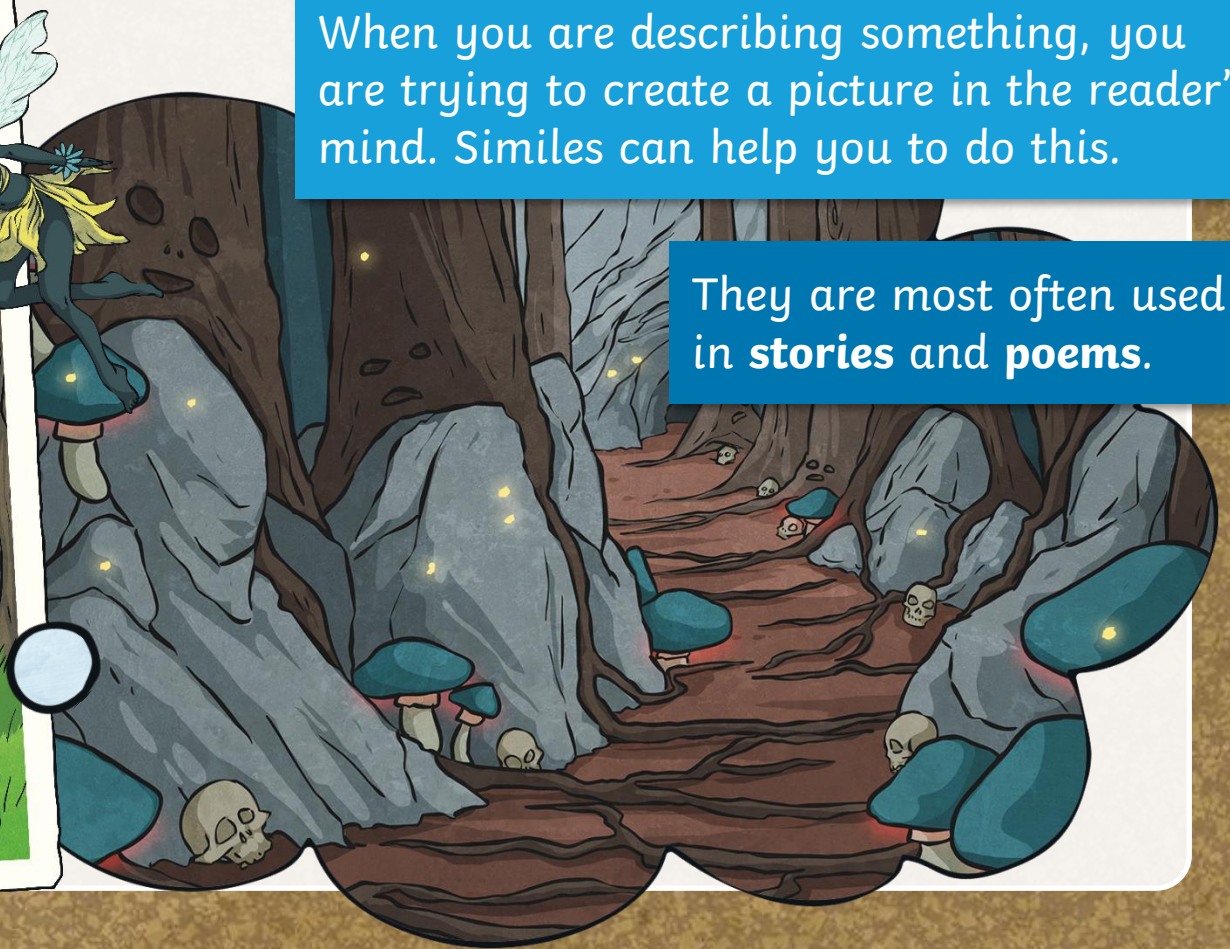


# Why?

Why do we use similes and adjectives?

When you are describing something, you are trying to create a picture in the reader's mind. Similes can help you to do this.

They are most often used in **stories** and **poems**.





# See How It Works

Why do we use similes and adjectives?

**The dog was big  
and fierce.**

Now if we add  
adjectives and similes...



**The house was  
beautiful.**

Now if we add  
adjectives and similes...

The black, scruffy dog was as big as a wolf and fierce like a very angry bear.

The ancient house was beautiful like an old fashioned painting.

Isn't that better?



# Sunflowers

On the next few slides you'll see some pictures of real sunflowers. It's your job to write at least four similes about the sunflowers. Remember to try to think of words that are exciting and unusual. Use google to help.

**Words to avoid:**

yellow

green

tall

pretty

nice

good

bright





Photo courtesy of ted\_M8@flickr.com - granted under creative commons licence - attribution





Photo courtesy of macieklew@flickr.com - granted under creative commons licence - attribution



© BHASKAR PEDDHAPATI | PHOTOGRAPHY



Photo courtesy of peddhapati@flickr.com - granted under creative commons licence - attribution





Photo courtesy of whitepebbles@flickr.com - granted under creative commons licence - attribution



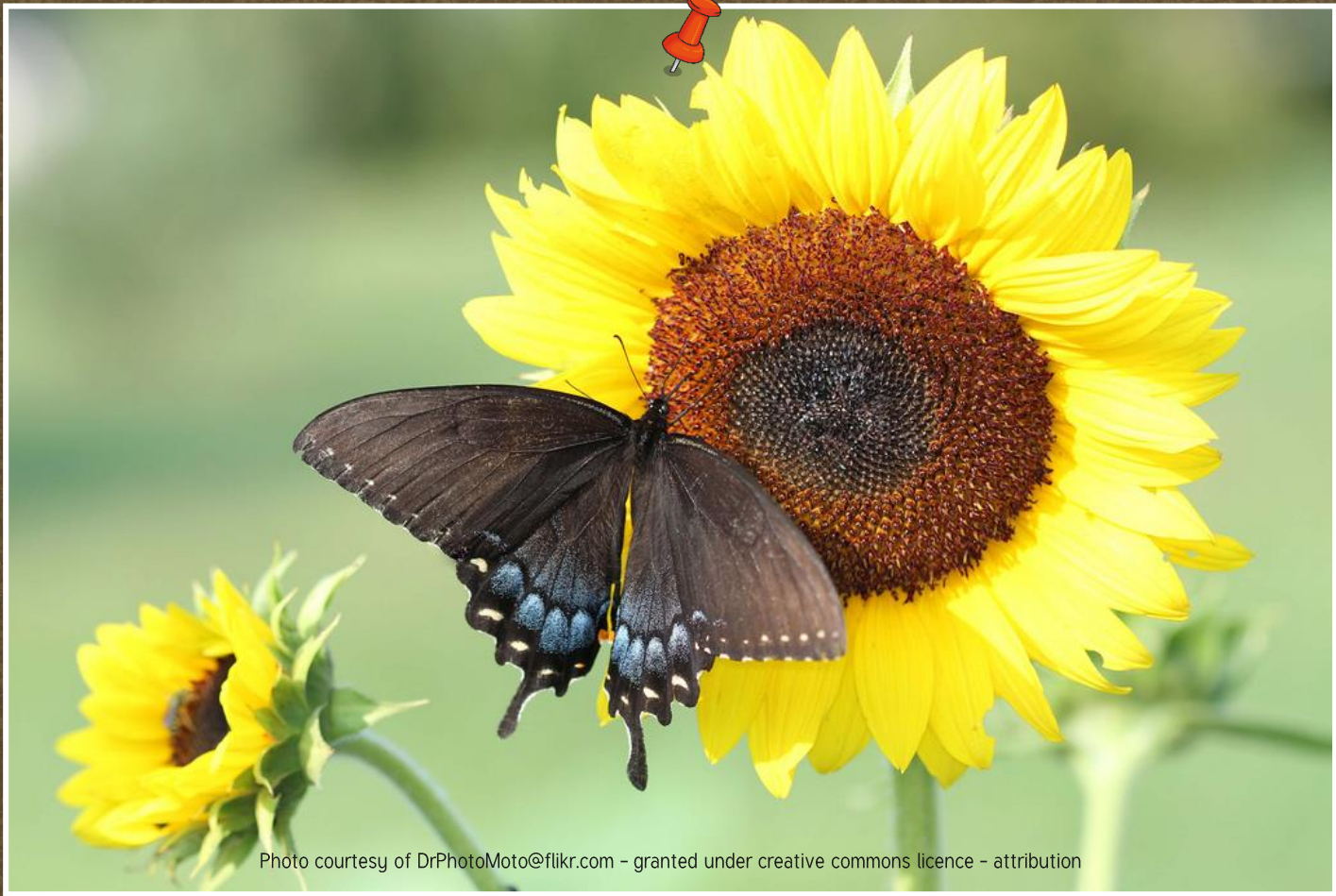


Photo courtesy of DrPhotoMoto@flickr.com - granted under creative commons licence - attribution